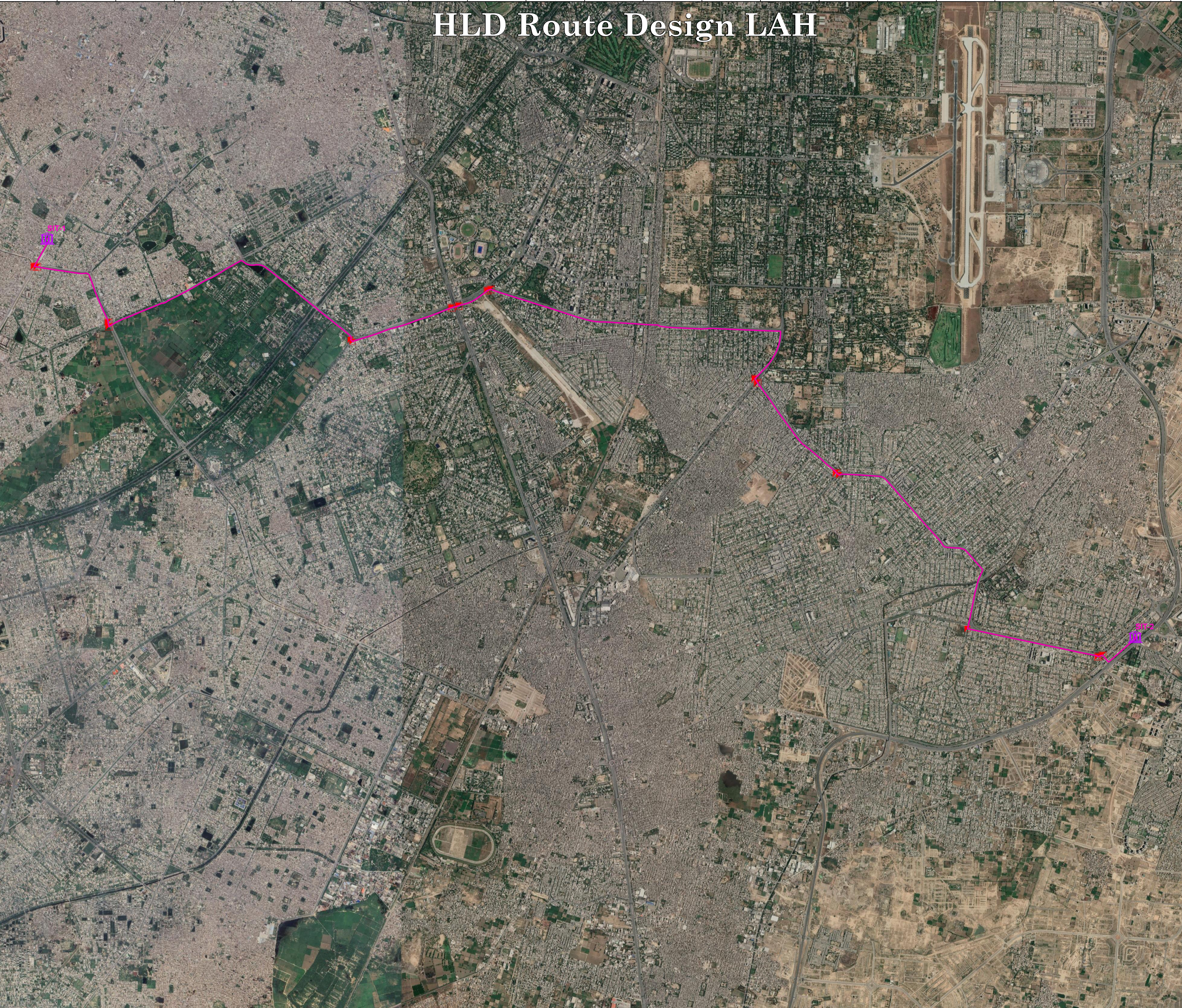


# HLD Route Design LAH



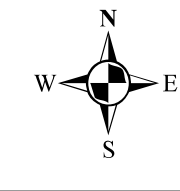
**Legend**

SDU, Design	Drop Duct Planned
MDU, Design	Main Duct Planned
Vacant Area	Drop Duct Implementation
SDU, RFS	Main Duct Implementation
MDU, RFS	Drop Duct Temporary
SDU, Operational	Main Duct Temporary
MDU, Operational	Drop Duct Operational
SDU, Survey	Main Duct Operational
MDU, Survey	Micro Fiber Cable
Others	Normal
Attachment	Parcels
Cabinet	FAT Boundary
HH, Planned	Cluster Boundary
MH, Planned	Scope Boundary
HH, Implementation	CO Boundary
MH, Implementation	FAT
HH, Operational	JCL
MH, Operational	CO
Pedestal	POP
Pole	ODB
Rack	PoleBox
Tower	
Vault	

**Inventory status Colour Code**

Abandoned	Survey
Operational	Temporary
Planned	Third Party
Implementation	

- Notes & Comments:**
1. Use SIT Digital Standards for Ducts, Cables, Trenches & ODN
  2. Do Trial Trenches before excavation
  3. Ensure safety and HSE during implementation
  4. Site implementation permit must be taken prior to start work
  5. MH/HH angles and levels must be maintained as per Road
  6. Implementation, Splicing & Labeling must follow approved LLD



## CLUSTER STATISTICS

Cluster ID	HH Category			Total House Holds
	MDU	SDU	VA	



## Detail Drawing LLD (Cable)

Prepared by :	SIT Digital	Date:	1/2/2024
Checked by :		Map Scale :	1:19,547
Validated by :		Sheet No :	1
		Version :	1